

MULTITEL 180 ALU

Env	Rev.	Descrizione	Data	Dis.	Contr.	Ap. A0
MFOX	0	EMISSIONE	06-03-00	WA		

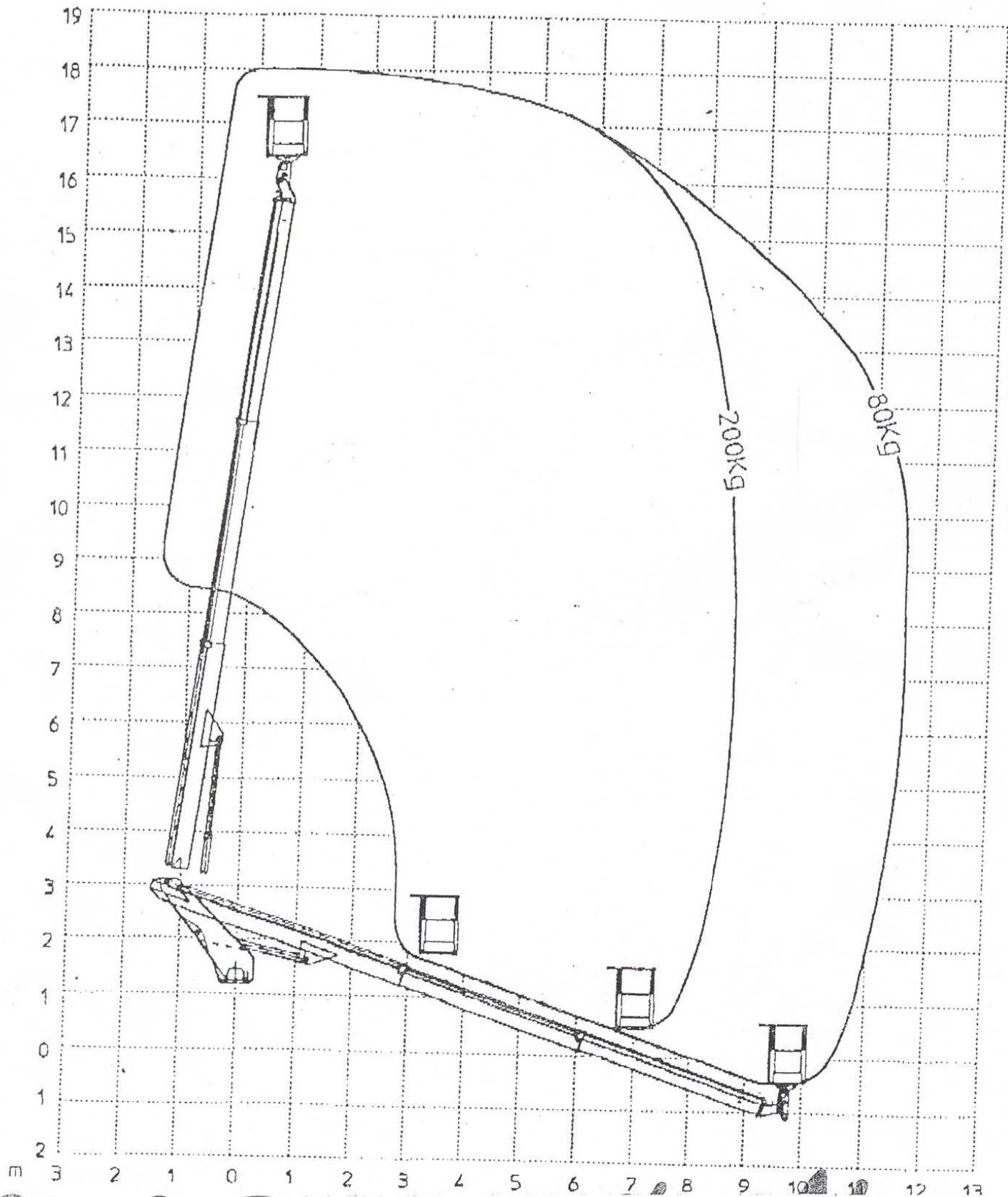
D29056

2/d

18

200Kg 80Kg

SBRACCIO DI LAVORO	8.6 m	11.5 m	±5%
WORKING OUTREACH	8.6 m	11.5 m	±5%
DEPORT DE TRAVAIL	8.6 m	11.5 m	±5%
SEITLICHE REICHWEITE	8.6 m	11.5 m	±5%

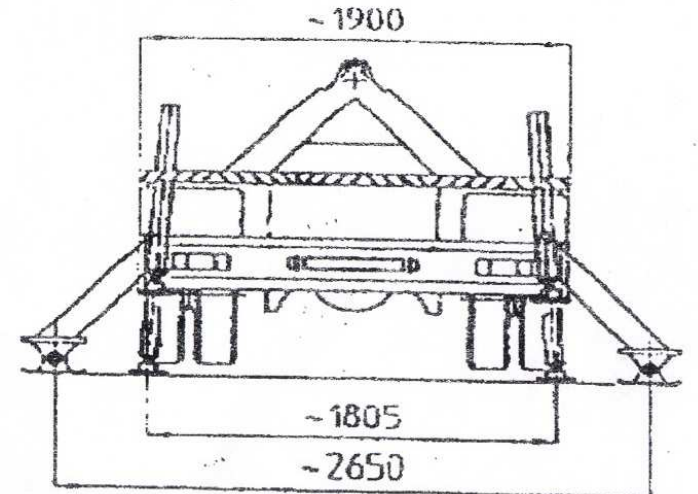
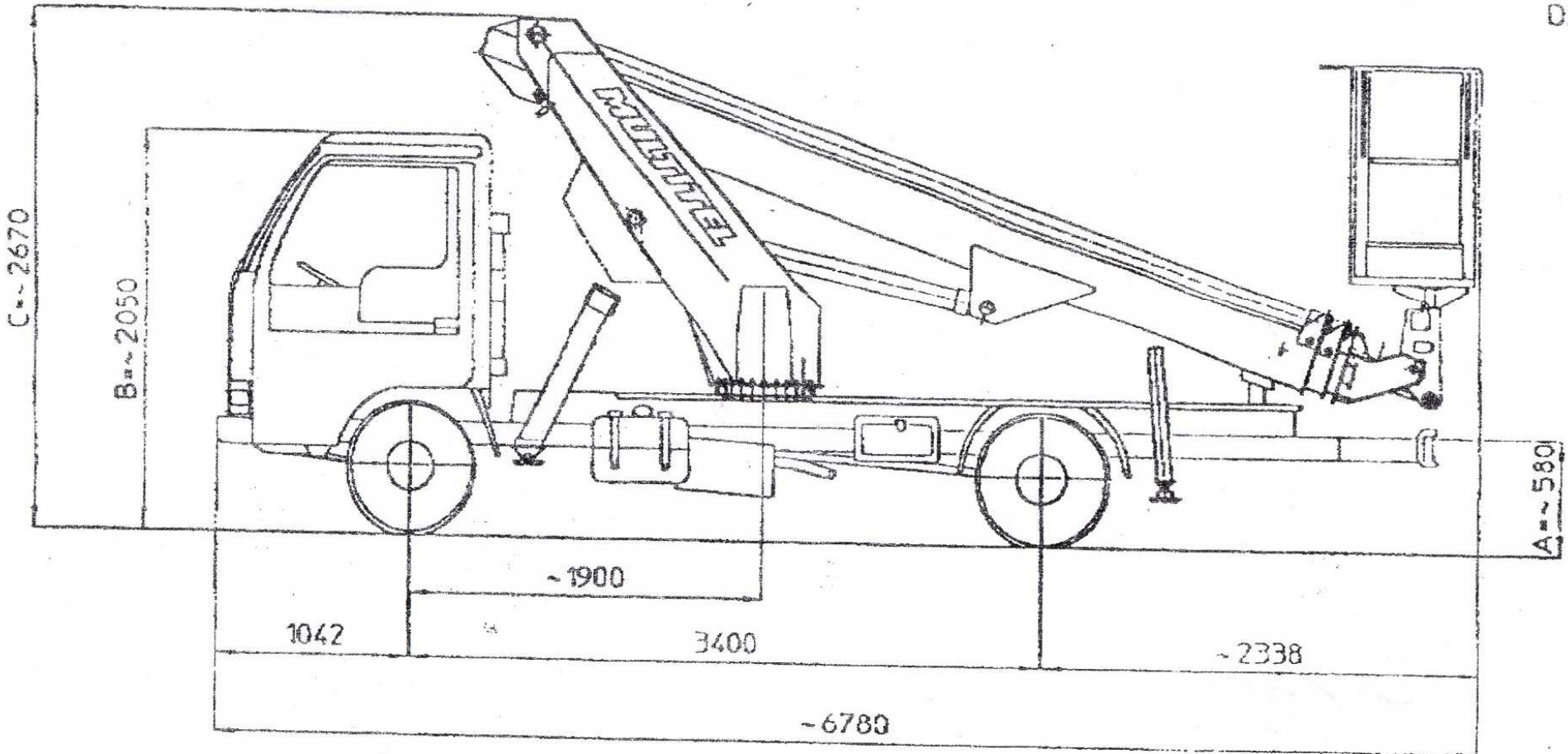


MULTITEL 180 ALU/AF - NISSAN CABSTAR 110.35

Line	Item	Description	Date	Des	Cont	Ap AC
MRK	0	EMISSIONE	07-04-00	WB		

029503

87



Le quote A-B sono relative alle dimensioni dell'autocarro, quindi devono essere verificate sulla stessa.
La quota C (altezza totale) e' subordinata alle quote A-B.

Les cotes A-B sont relatives aux dimensions du porteur, donc elles doivent être vérifiées sur le porteur même.
La cote C (hauteur totale) est subordonnée aux cotes A-B.

The dimensions A-B are related to the truck sizes, therefore they must be verified.
The dimension C (total height) is subject to A-B.

Die Abmessungen A-B betreffen die Fahrzeugmaße, daher sollen sie geprüft werden.
Die Abmessung C (Gesamthöhe) hängt von A-B Abmessungen ab.